

Artromick

Two-Tier Cassette

Exclusive to Artromick Medication Carts



Artromick Two-Tier Cassettes offer single-bin access. Choose between three different bin widths, 3.5", 4.5" and 6.5". Stack any combination of Artromick's Two-Tier Cassettes to customize the medication cart configuration that best suits your requirements.



4 1/2" Bin
with dividers
4.5" (W) x 10.75" (L)



Artromick™

4800 Hilton Corporate Drive, Columbus, OH 43232

www.artromick.com

800-848-0403

© 2007 Artromick Form A-109

Artromick

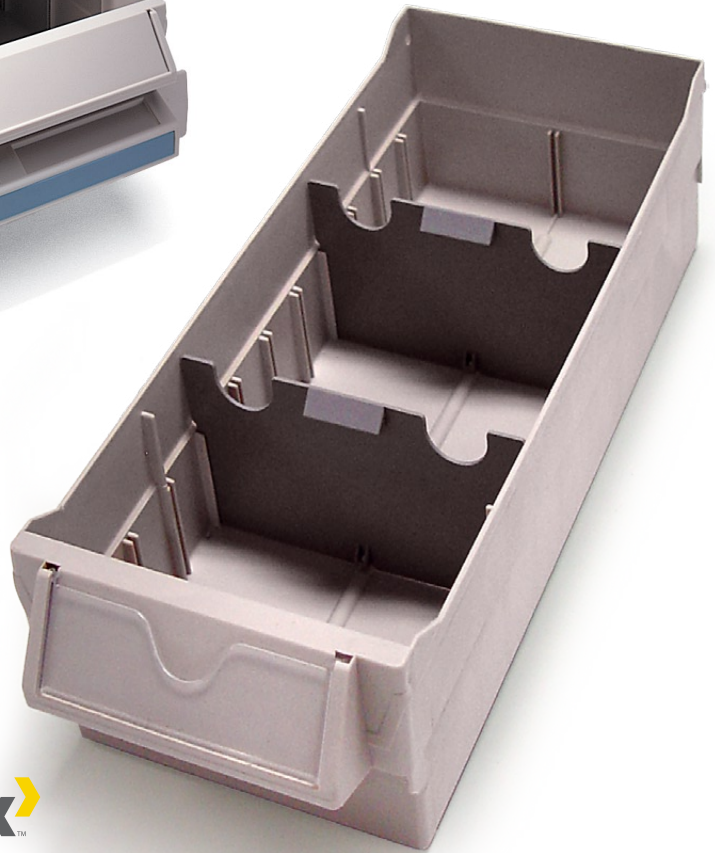
Hospital Cassette

Exclusive to Artromick Medication Carts



Artromick Hospital Cassette offers full shelf access and the option of three different bin sizes (3.5", 4.5" and 6.5"). Individual bins can be subdivided into sections to further customize the cassette. The lock keeps bins secure within the facility and in transport. All Artromick Hospital Cassettes feature an expansive label area.

4 1/2" Bin
with dividers
4.5" (W) x 10.75" (L)



Artromick

4800 Hilton Corporate Drive, Columbus, OH 43232

www.artromick.com

800 848 0403

© 2007 Artromick Form A-110