

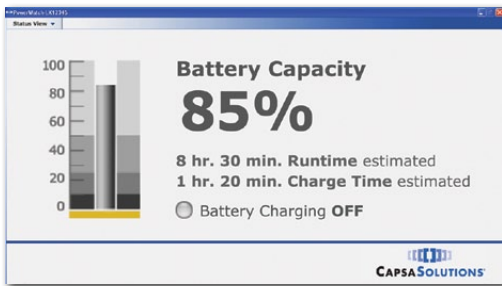
# PowerWatch™ Power System Monitoring Software

## Capsa Mobile Computing Solutions

**Capsa Solutions PowerWatch™ Monitoring Software** gives the facility IT and clinical teams a real-time and ever-present view into the power system health of their mobile computing carts.

- Empowers your facility with the tools necessary to effectively manage the mobile computing cart fleet and minimize power system issues
- Supports an environment to ensure optimized cart uptime
- Extends battery life and product value by preventing deep discharge
- Signals the computer to systematically start the shut down process before the battery discharges to 0%
- Power system use history provides insights to help create recharging best practice protocols
- Share system reports with Capsa Technical Support to discuss, diagnose, troubleshoot, and review power system performance issues

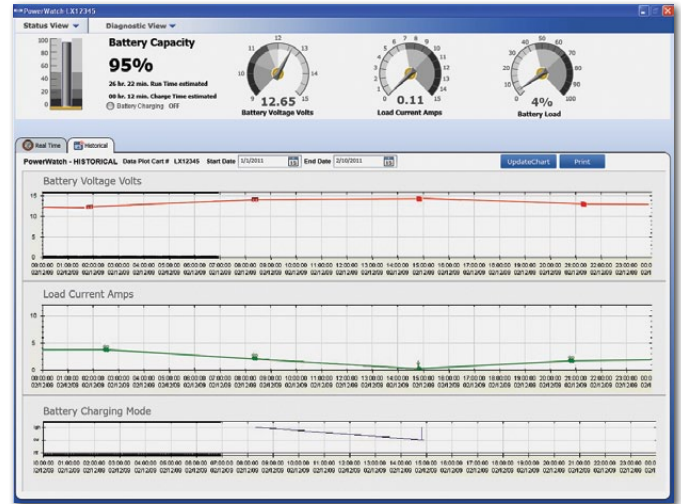
### Power System Status View



The PowerWatch™ Status View gives the cart user a quick view of the power system battery status. This intuitive indicator provides key information including:

- On-Screen view of power system stats to illustrate percentage of estimated battery power remaining, run time remaining, and time required to fully recharge system
- On-Screen charging indicator to clearly communicate whether the cart is recharging
- Both visual and audible Low Battery Status Alerts can be set to appear or speak in either English or Spanish

### Power System Diagnostic View



The PowerWatch™ Diagnostic View gives your facility the insight to understand how the mobile computing cart is using power. Using the Diagnostic View provides information through an array of features including:

- Real-time view of power usage:
  - Provides real-time graphing of voltage available, load currents, and system charging
- Historical view of power usage and charging practices:
  - Provides historical view into battery voltage available, load currents, and system charging events in a customizable time frame trending from weeks, to minutes, to seconds
- Battery Status Report provides a detailed view of each battery event
- Battery Replacement Report offers a historical log of battery exchange events

### PowerWatch Enterprise Permits System Administrator to:

- View battery status of multiple carts at once
- View historical battery, charging, and power system data
- Create custom reports to analyze system performance and trending
- Receive email or text notification of need for battery charging on specific cart units